

Introducing a high quality brand that parents love and trust

#1
infant formula
brand in Latin
America*



Formulated with a unique combination of ingredients,
designed to support digestive health

*Based on Tabs data as of December 2019.

Introducing a high quality brand that parents love and trust

#1
infant formula
brand in Latin
America*



Formulated with a unique combination of ingredients,
designed to support digestive health

Introduction

Digestive
Health

Key
Ingredients

L. reuteri

2'-FL HMO

70:30
whey:casein

Summary

Digestive health is a fundamental part of the overall health of infants

Breastmilk is the best source of infant nutrition and has key components that support digestive health



Probiotics

HMOs

Proteins

HMOs=Human milk oligosaccharides.

NAN[®] PRO has a unique combination of ingredients, designed to support digestive health



L. reuteri

Probiotic *Lactobacillus reuteri* (*L. reuteri*), naturally found in breastmilk:

- Helps balance the microbiota and support digestive health

2'-FL HMO

2'-Fucosyllactose (2'-FL) HMO,[†] structurally identical to that found in breastmilk:

- Supports digestive and immune health

70:30 whey:casein

70:30 whey:casein protein blend, similar to mature breastmilk:

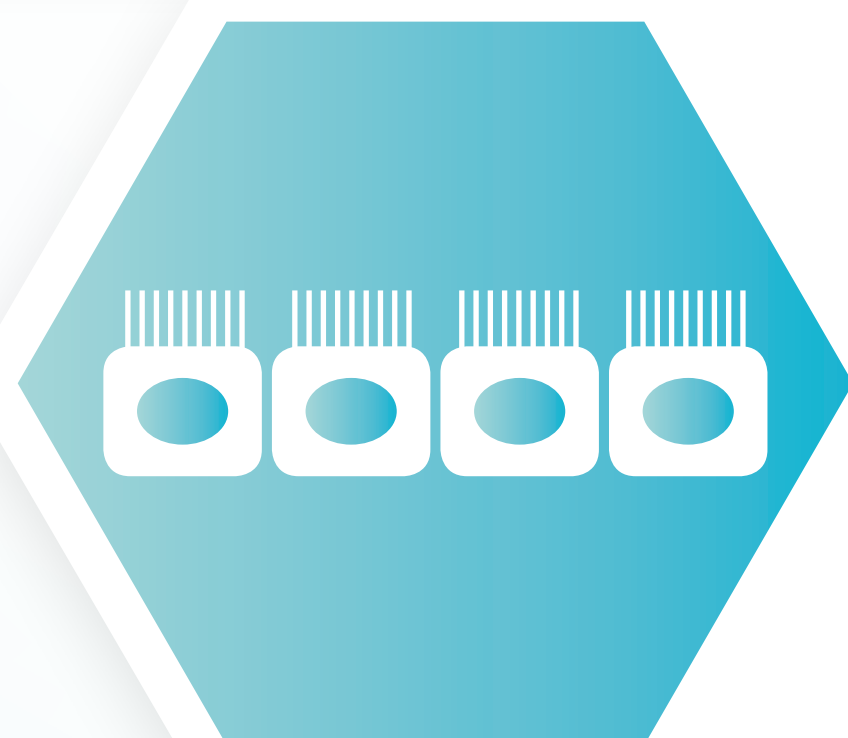
- Easy to digest
- Provides an essential amino acid profile similar to mature breastmilk

*Human milk oligosaccharides (HMOs) are a group of prebiotics found in human milk and 2'-FL is the most abundant HMO found in breastmilk. The 2'-FL HMO in Nestlé NAN[®] PRO is structurally identical to one of those found in significant levels in breastmilk. Not from human milk.

NAN[®] PRO has probiotic *L. reuteri* to help balance the microbiota and support digestive health



Improves the ratio of beneficial to potentially pathogenic bacteria¹⁻⁶



Increases gut barrier function/decreases intestinal permeability⁷



Improves gut motility and increases rate of gastric emptying⁸⁻¹⁰

L. reuteri=*Lactobacillus reuteri*.

References

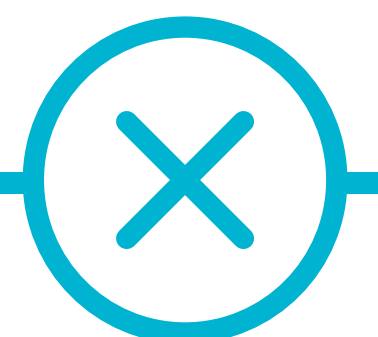
1. Savino F, et al. *Pediatrics*. 2010;126(3):e526-533.
2. Papagaroufalis K, et al. *Nutr Metab Insights*. 2014;7:19-27.
3. Rodenas CL, et al. *J Pediatr Gastroenterol Nutr*. 2016;63(6):681-687.
4. Savino F, et al. *Clinical Chimica Acta*. 2015;451(Part A):82-87.
5. Savino F, et al. *Acta Paediatrica*. 2017;106(4):573-578.
6. Szajewska H, et al. *J Pediatr*. 2013;162(2):257-262.
7. Rosenfeldt V, et al. *J Pediatr*. 2004;145:612-616.
8. Indrio F, et al. *Eur J Clin Invest*. 2011;41(4):417-422.
9. Indrio F, et al. *J Pediatr*. 2008;152:801-806.
10. Indrio F, et al. *J Phys Pharm*. 2009;60(Suppl 6):27-31.

intestinal permeability⁷



Improves gut motility
and increases rate of
gastric emptying⁸⁻¹⁰

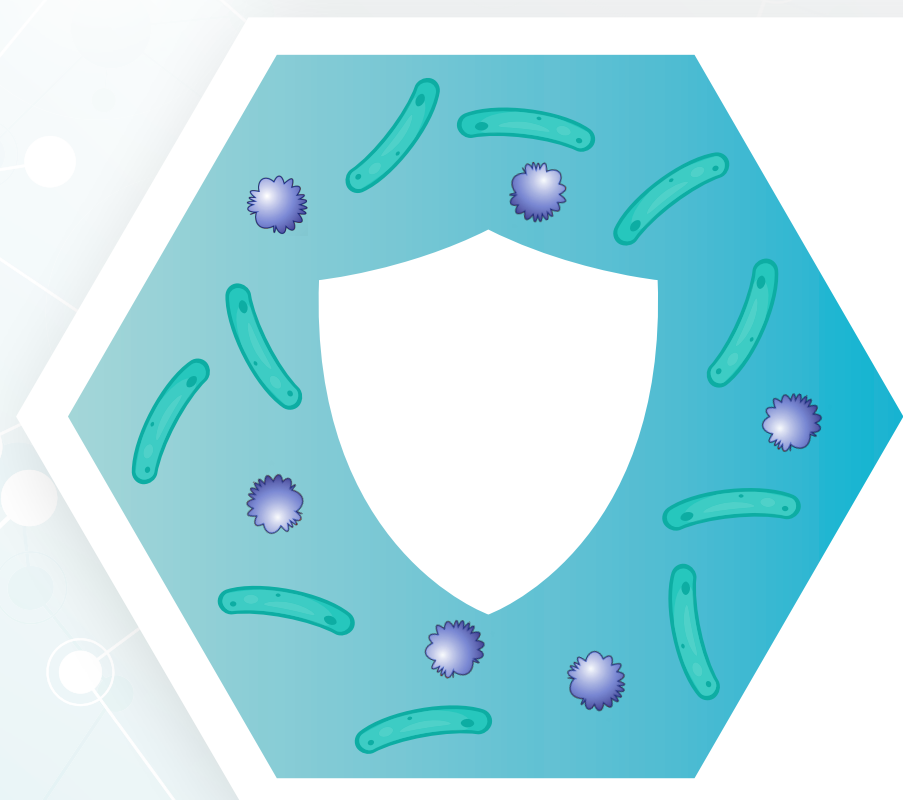
L. reuteri=*Lactobacillus reuteri*.



NAN[®] PRO has 2'-FL HMO to support digestive and immune health¹⁻³



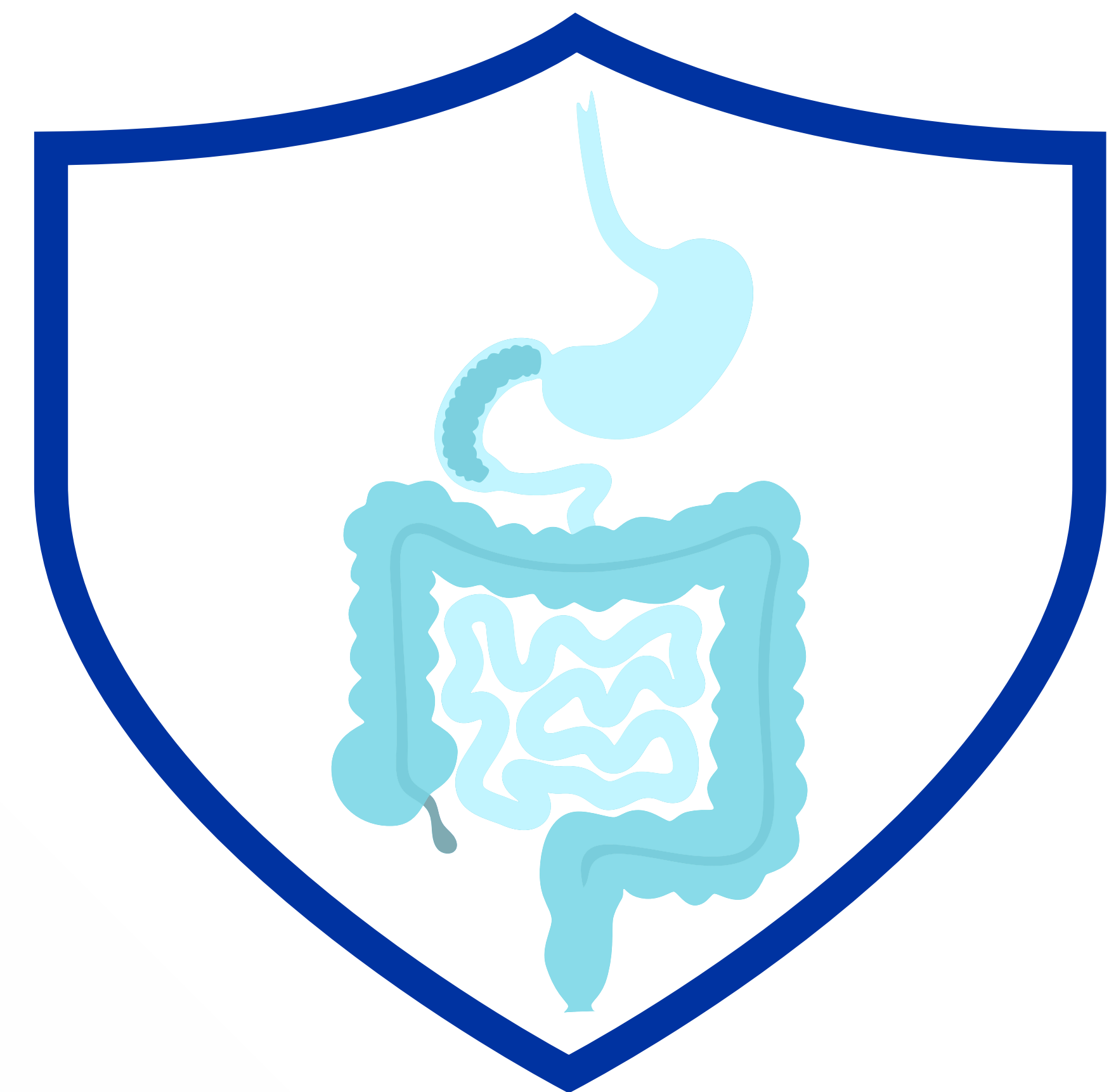
Selectively enhances growth of good bacteria (prebiotic effect)



Binds to pathogenic bacteria and thus reduces their adherence (decoy effect)



Directly influences cellular immunity as 1–2% is absorbed into the bloodstream (immune effect)



*Human milk oligosaccharides (HMOs) are a group of prebiotics found in human milk and 2'-FL is the most abundant HMO found in breastmilk. The 2'-FL HMO in Nestlé NAN[®] PRO is structurally identical to one of those found in significant levels in breastmilk. Not from human milk. 2'-FL HMO=2'-Fucosyllactose human milk oligosaccharide.

References

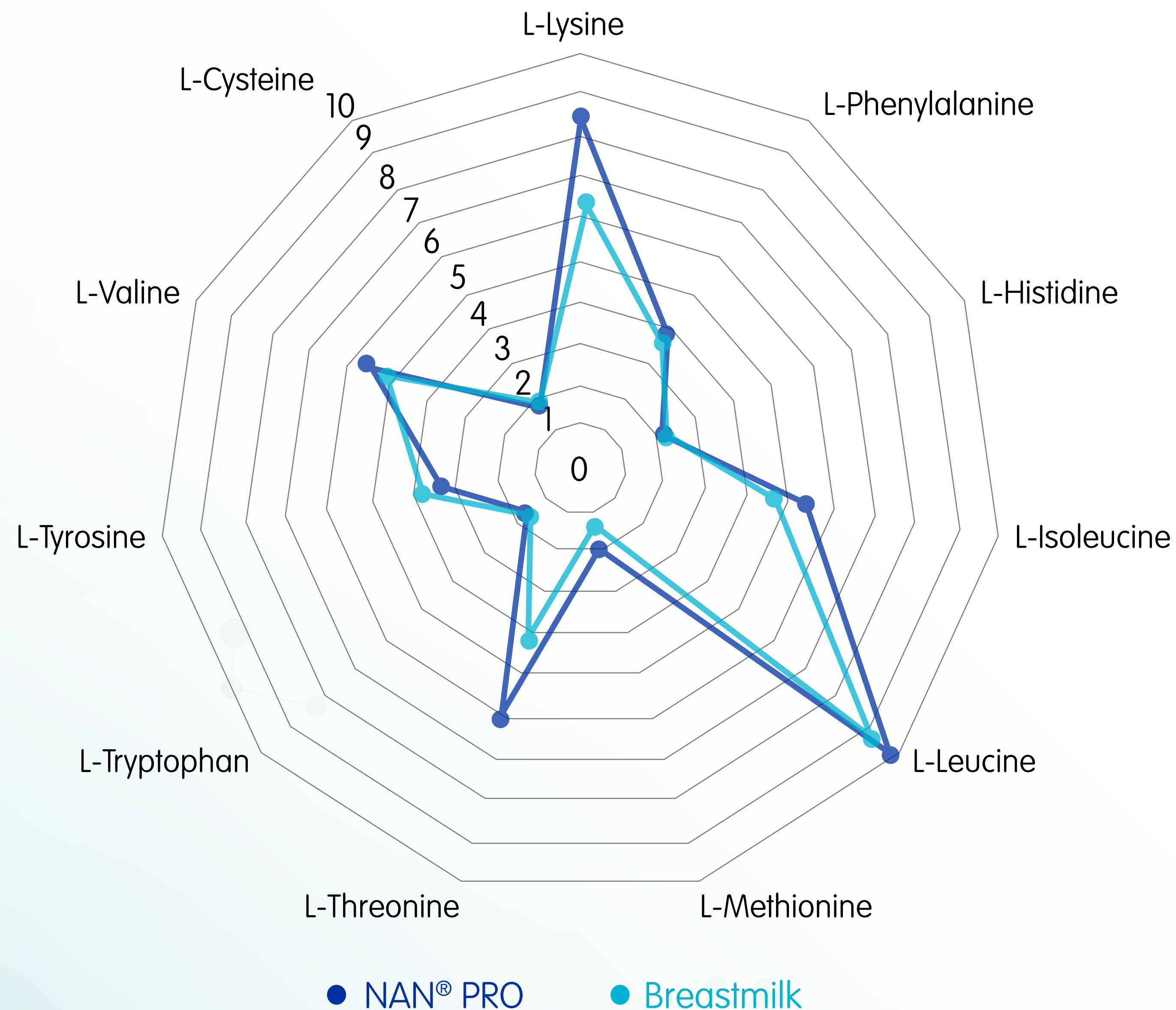
1. Bode L. *Glycobiology*. 2012;22(9):1147-1162.
2. Bode L, et al. *Adv Nutr*. 2012;3:383S-391S.
3. Zivkovic A, et al. *PNAS*. 2010;108(Suppl 1):4653-4658.



*Human milk oligosaccharides (HMOs) are a group of prebiotics found in human milk and 2'-FL is the most abundant HMO found in breastmilk. The 2'-FL HMO in Nestlé NAN® PRO is structurally identical to one of those found in significant levels in breastmilk. Not from human milk. 2'-FL HMO=2'-Fucosyllactose human milk oligosaccharide.

NAN[®] PRO has an easy-to-digest 70:30 whey:casein protein blend that provides an essential amino acid profile similar to mature breastmilk^{1,2}

Amino acid profiles (g aa/100 g protein)

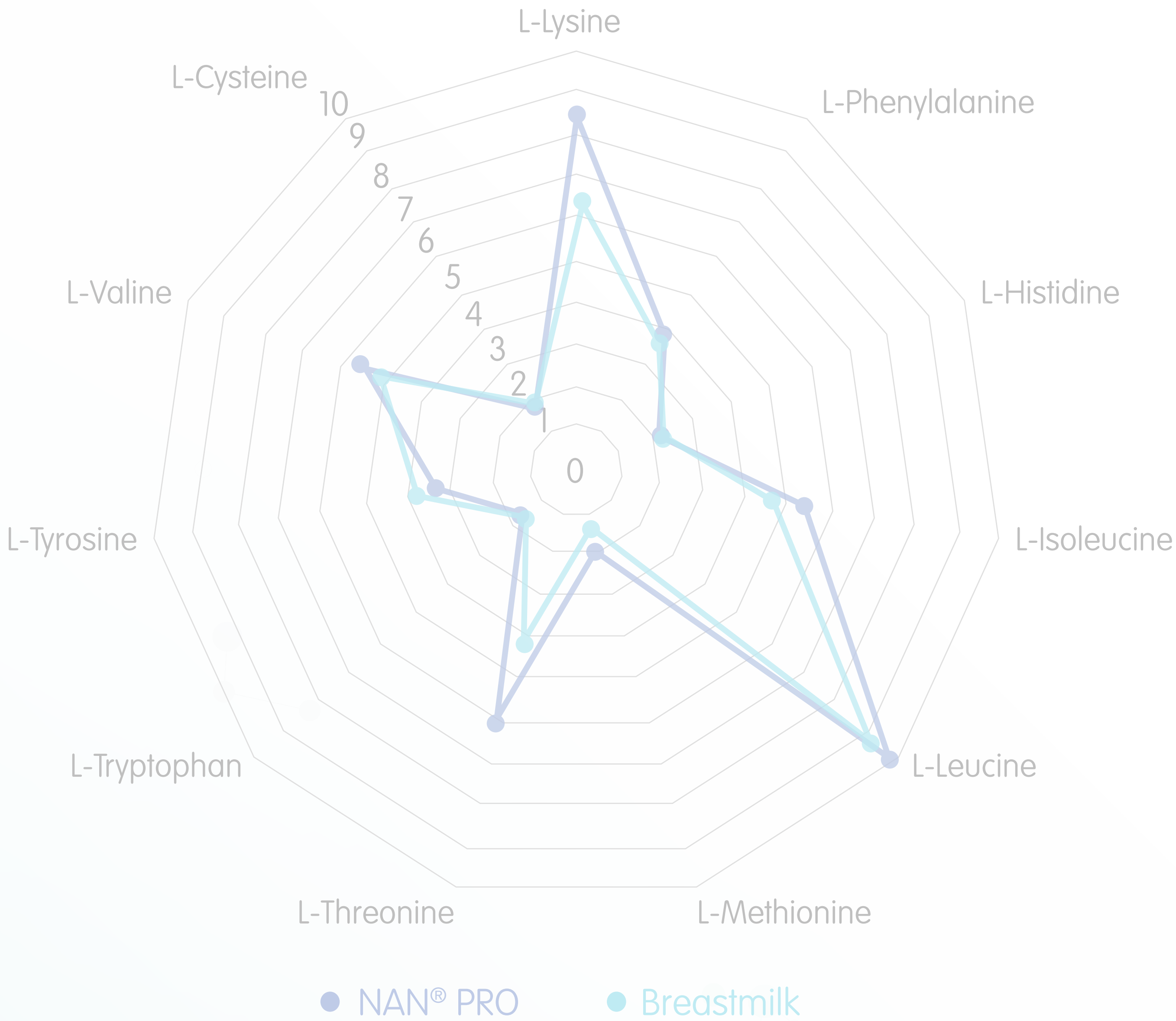


References

- 1. Data on file.
- 2. Zang, et al. *Nutrients*. 2013;5:4800-4821.



Amino acid profiles (g aa/100 g protein)



Recommend NAN[®] PRO for parents who love and trust the #1 infant formula brand in Latin America*



Quality nutrition, great value

With a unique combination of ingredients, designed to support digestive health



Probiotic *Lactobacillus reuteri* (*L. reuteri*), naturally found in breastmilk:

- Helps balance the microbiota and support digestive health



2'-Fucosyllactose (2'-FL) HMO,[†] structurally identical to that found in breastmilk:

- Supports digestive and immune health



70:30 whey:casein protein blend, similar to mature breastmilk:

- Easy to digest
- Provides an essential amino acid profile similar to mature breastmilk

*Based on Tabs data as of December 2019. [†]Human milk oligosaccharides (HMOs) are a group of prebiotics found in human milk and 2'-FL is the most abundant HMO found in breastmilk. The 2'-FL HMO in Nestlé NAN[®] PRO is structurally identical to one of those found in significant levels in breastmilk. Not from human milk. All trademarks are owned by Société des Produits Nestlé S.A., Vevey, Switzerland or used with permission. © 2020 Nestlé.